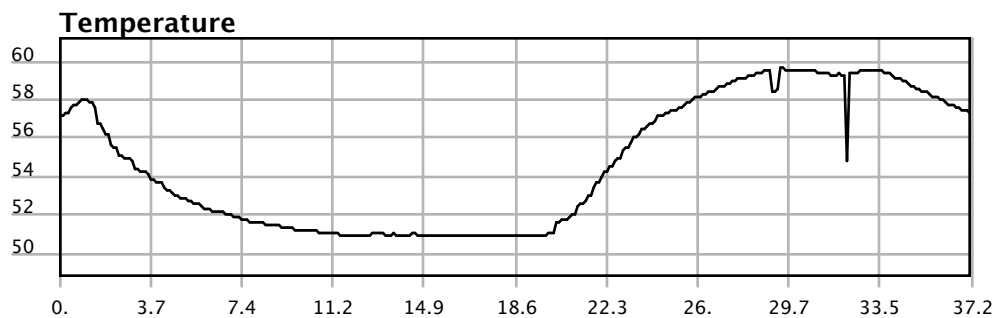
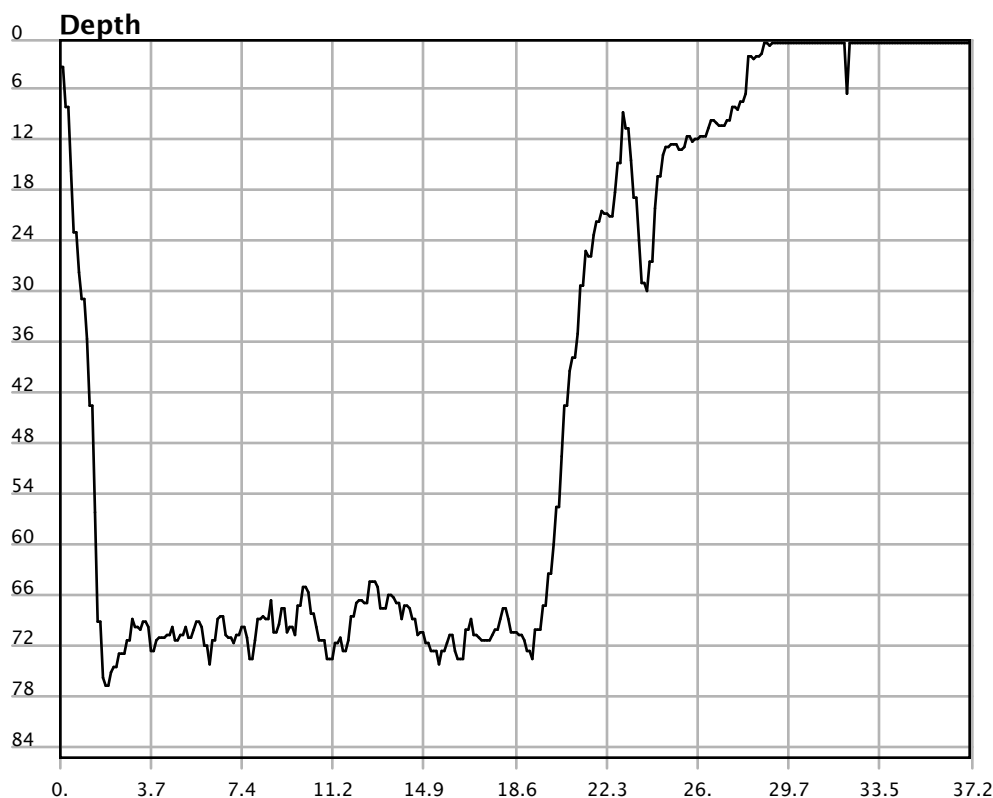


SU-08538: 9/17/11 8:38 AM



Interval	10 second(s)
Time	00:37:10 B.T. 00:37:10 B.T. >24 hrs S.I.
Depth	40.59 ft 40.59 ft 76.73 ft 76.73 ft
Temperature	54.70 °F 54.70 °F 50.86 °F 50.86 °F
Ascent Rate	37.46 ft/min (max.) 37.46 ft/min (max.)
Tank Pressure	0 PSI (in) 0 PSI (out)
SAC Rate	0.0 PSI/min
Altitude	0 ft
Water Type	Salt Water

Site: Chester Poling

Buddy: Max Konig

Comments

First boat dive to Chester Poling. Swam down mooring line to stern, looked around stern for a while. Visibility was pretty poor. Had a little trouble locating catwalk at first, then worked way forward to the break. Max went in a very small ways into break; then it was time to head back up. Along the way he stopped and fed a shell or sea urchin to the fish; they were swarming around him. We got back to the stern. Had a major leg cramp right at the mooring line; mostly used bouyancy to go up. Followed the mooring line back up, and encountered Paul and his group there. It was a little crowded there, so I let go of

Additional Notes

noticed I was at 30 feet and went back up to 15
and did safety stop.